



Cambridge International Examinations
Cambridge International General Certificate of Secondary Education

CANDIDATE
NAME

CENTRE
NUMBER

--	--	--	--	--

CANDIDATE
NUMBER

--	--	--	--



CO-ORDINATED SCIENCES

0654/21

Paper 2 (Core)

May/June 2014

2 hours

Candidates answer on the Question Paper.

No Additional Materials are required.

READ THESE INSTRUCTIONS FIRST

Write your Centre number, candidate number and name on all the work you hand in.

Write in dark blue or black pen.

You may use an HB pencil for any diagrams or graphs.

Do not use staples, paper clips, glue or correction fluid.

DO NOT WRITE IN ANY BARCODES.

Answer **all** questions.

Electronic calculators may be used.

You may lose marks if you do not show your working or if you do not use appropriate units.

A copy of the Periodic Table is printed on page 32.

At the end of the examination, fasten all your work securely together.

The number of marks is given in brackets [] at the end of each question or part question.

This document consists of **31** printed pages and **1** blank page.

- 1 (a) (i) Complete the following sentences about chemical bonding choosing words from the list below.

Each word may be used once, more than once or not at all.

electrons	ions	lost	molecules
neutralised	nucleons	shared	transferred

Compounds may contain covalent or ionic bonds.

When a covalent bond forms, electrons are between atoms.

When an ionic bond forms, are
between atoms. [2]

- (ii) Predict the type of chemical bonding in the compound carbon dioxide.

Give a reason for your answer.

type of bonding

reason
..... [1]

(b) Fig. 1.1 shows two methods, **A** and **B** that may be used to fill a test-tube with carbon dioxide. Both sets of apparatus are at room temperature.

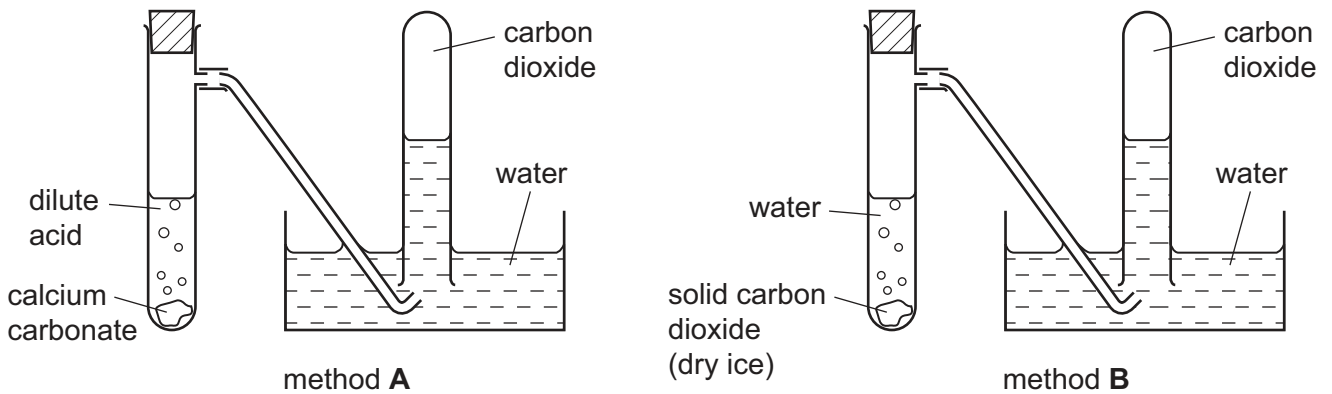


Fig. 1.1

(i) Describe a chemical test for carbon dioxide.

test

result [2]

(ii) Method **A** produces carbon dioxide by a chemical change. Method **B** produces carbon dioxide by a physical change.

Explain why these statements are correct.

method **A** chemical change

explanation

.....

method **B** physical change

explanation

.....

[2]

- (c) Fig. 1.2 shows an experiment a student carried out to compare the reactivity of three metals, magnesium, iron and copper.

The pieces of metal she used were the same size. She added them to identical samples of dilute hydrochloric acid in three test-tubes, **P**, **Q** and **R**.

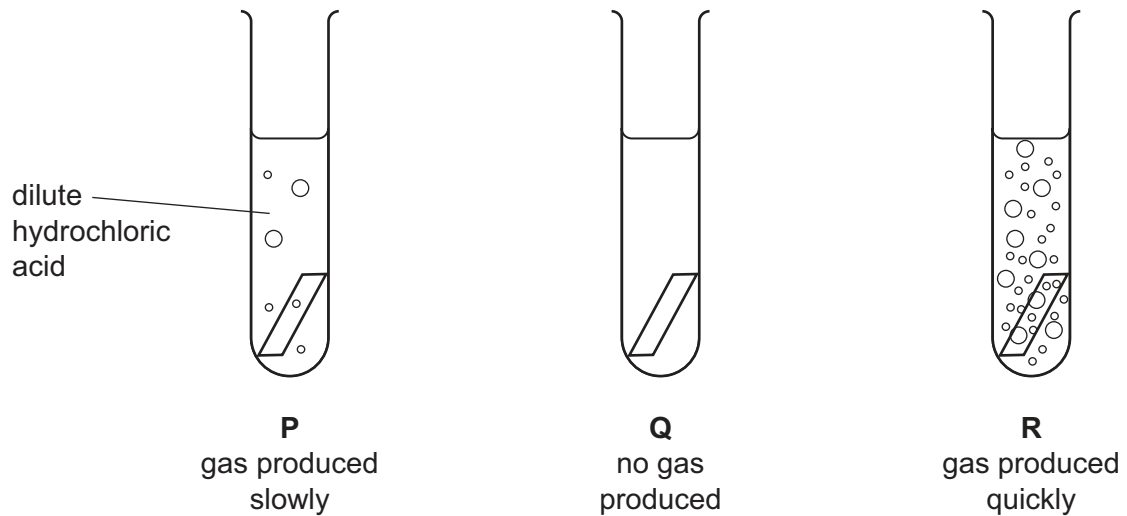


Fig. 1.2

- (i) Name the gas that was given off in test-tubes **P** and **R**.

..... [1]

- (ii) State the metal contained in each of the test-tubes.

tube **P** contained

tube **Q** contained

tube **R** contained

[1]

- (iii) Explain your answer to (ii).

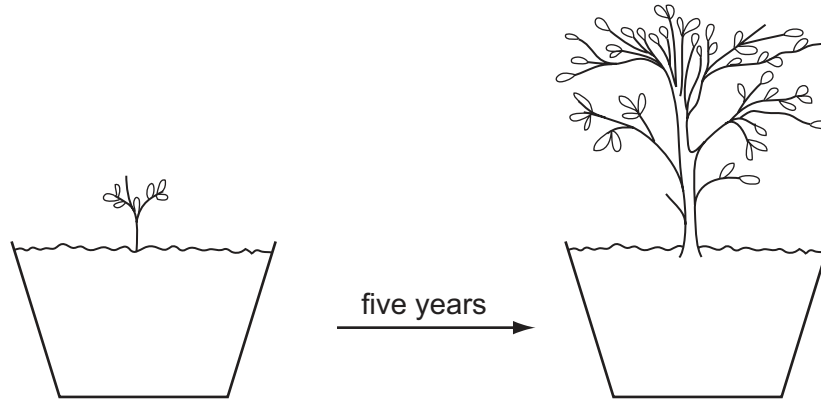
.....

 [2]

Please turn over for Question 2.

- 2 In the seventeenth century, it was believed that plants obtained all their food from the soil. A scientist called Jan van Helmont did an experiment to investigate this.

He weighed a young willow tree, and then planted it in a large tub containing a weighed amount of dry soil. He added water to the soil, and kept the tree for five years, watering it regularly. After five years, the tree had grown.



After the five years, he weighed the tree again, and he also dried and reweighed the soil in the tub. Table 2.1 shows his results.

Table 2.1

	mass of tree / kg	mass of dry soil / kg
at the start	2.5	250.0
after five years	76.5	249.9

- (a) (i) Name the process by which plants manufacture carbohydrates from raw materials.

..... [1]

- (ii) Write the **word** equation for this process.

..... [2]

- (b) (i) Describe how the mass of the soil changed over the five years of the experiment.

..... [1]

- (ii) Suggest an explanation for this result.

.....
 [1]

(c) Van Helmont thought that the growth of his tree was entirely due to the water that he had added. This conclusion was only partly correct.

(i) Explain in what way the conclusion was correct.

..... [1]

(ii) State which other part of the environment contributed to the mass of the tree.

..... [1]

(d) Since van Helmont decided that the tree only needed water to grow, he might have tried another experiment, growing the tree in a bucket of water, with no soil.

Explain why, if van Helmont had tried this experiment, the tree would not have grown well.

.....
..... [1]

- 3 Fig. 3.1 shows information about two trucks, **X** and **Y**, coming to rest under the action of the same braking force.

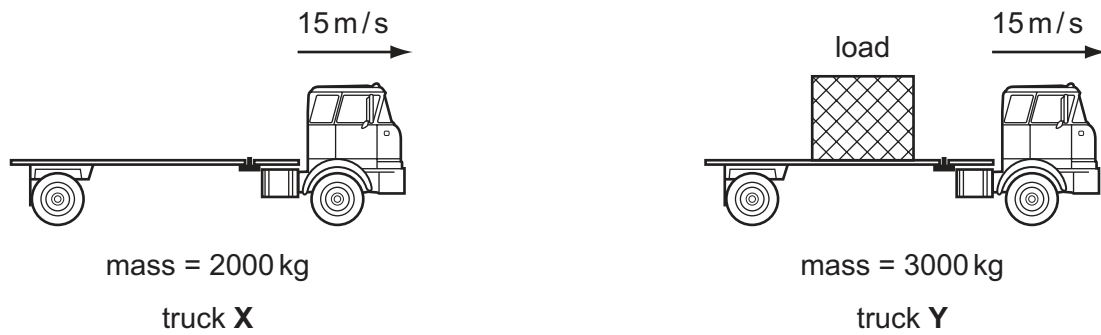


Fig. 3.1

The mass of truck **X** is 2000 kg and the mass of truck **Y** and its load is 3000 kg .

Fig. 3.2 shows the speed/time graph for the two trucks.

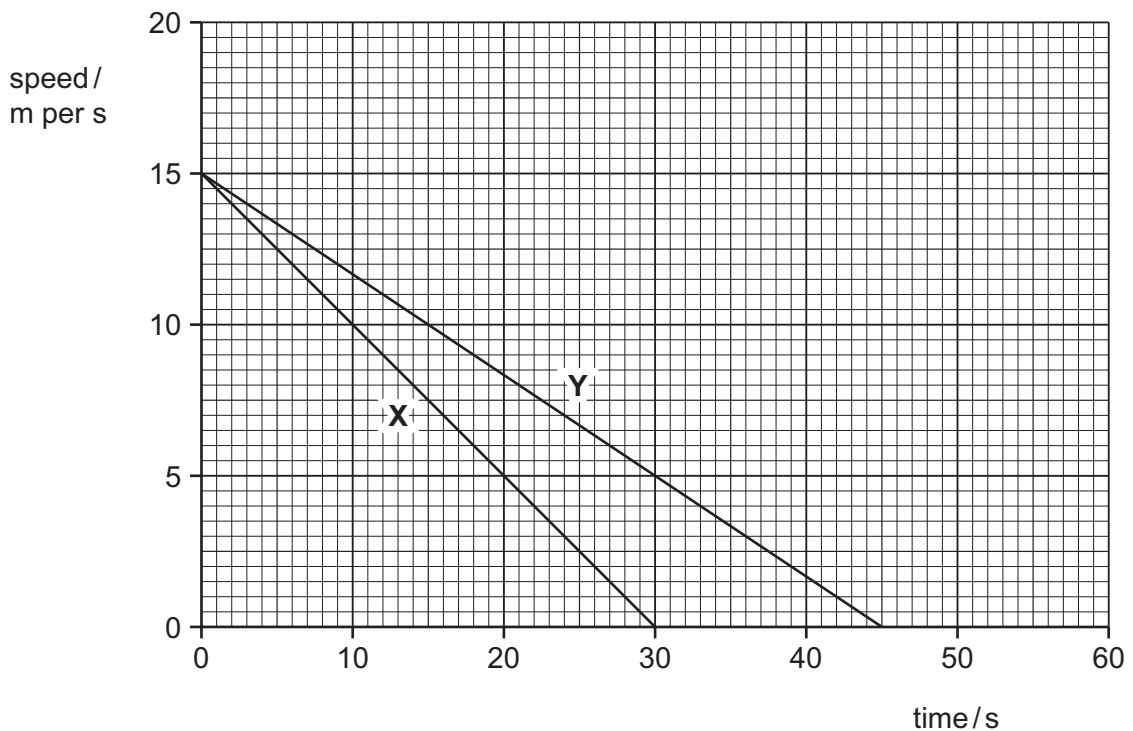


Fig. 3.2

- (a) (i) After how many seconds did truck **X** stop?

..... seconds [1]

- (ii) What was the maximum speed of truck **Y**?

..... m/s [1]

(iii) Explain how Fig. 3.2 shows that truck X has the greater deceleration.

.....

 [1]

(b) The load truck Y is carrying, is a large metal block. The block is shown in Fig. 3.3.

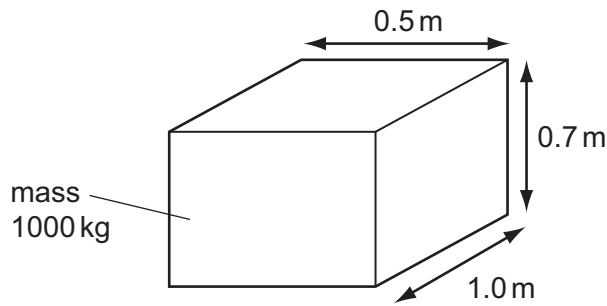


Fig. 3.3

(i) Calculate the volume of the block.

volume = m³ [1]

(ii) The mass of the block is 1000 kg.

Calculate the density of the block.

State the formula that you use and show your working. State the unit of your answer.

formula

working

density = unit [3]

(c) The metal block is going to a factory to be melted down into a liquid. The melting point of the metal is 660°C .

(i) State the meaning of the term *melting point*.

.....
..... [1]

(ii) Complete Fig. 3.4 to show the arrangement of particles in a liquid.

The diagram for a solid has been done for you.

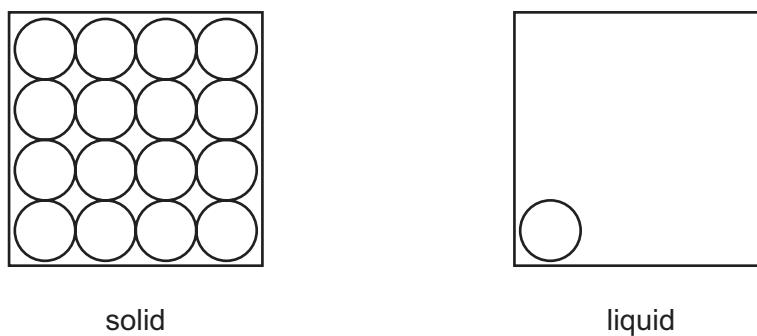


Fig. 3.4

[2]

Please turn over for Question 4.

4 Fuels react with oxygen in combustion reactions. During these reactions, heat energy is released.

(a) (i) Name and state a use for **one** gaseous fuel and **one** liquid fuel.

gaseous fuel

name

use

liquid fuel

name

use

[4]

(ii) State the word used to describe chemical reactions that release heat energy.

..... [1]

(b) When some fuels are burned, the mixture of combustion products contains sulfur dioxide and oxides of nitrogen.

State **two** harmful effects of these gases in the environment.

1

.....

2

..... [2]

(c) Coal is a solid fuel that contains a large amount of the element carbon.

Large pieces of coal burn slowly. Coal in the form of a fine powder (coal dust) burns very quickly.

(i) Name a gas that is formed when the carbon in coal is oxidised.

..... [1]

(ii) Explain why coal dust burns more quickly than large pieces of coal.

.....

..... [1]

(iii) Coal mines contain electrical machinery which may cause sparks.

Suggest and explain reason why coal dust in the air inside a coal mine could be very dangerous.

.....
.....
..... [2]

5 (a) Fig. 5.1 shows a copper wire placed between the poles of a strong magnet.

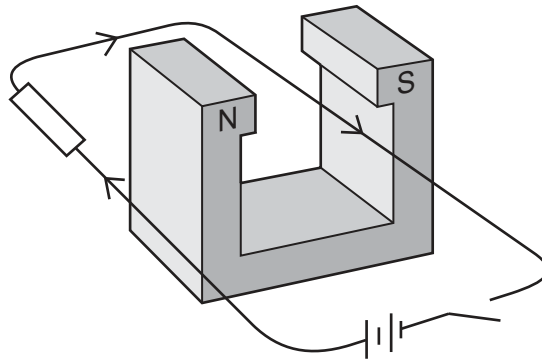


Fig. 5.1

(i) Describe what a student observes when the switch is closed.

.....
 [1]

(ii) Describe the change in the observation in (i) if the current is in the opposite direction.

.....
 [1]

(iii) Suggest the change in the observation of (i) if there is a larger current in the wire.

.....
 [1]

(b) (i) Explain why a balloon rubbed with a woollen cloth gains a negative electric charge.

.....

 [2]

Fig. 5.2 shows two similarly charged balloons, suspended close together.

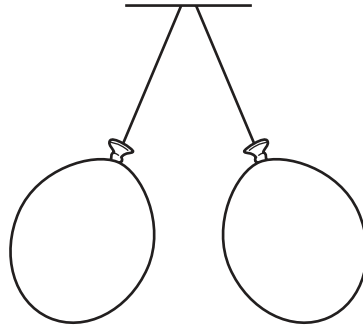


Fig. 5.2

(ii) Explain why the two balloons move apart.

.....
..... [1]

(c) In a domestic lighting circuit, lamps are connected in parallel.

Explain why the lamps are not connected in series.

.....
.....
..... [2]

(d) Describe how a fuse protects a worker using an electric drill.

.....
.....
..... [2]

6 Fig 6.1 shows part of a food web in African grassland (savannah).

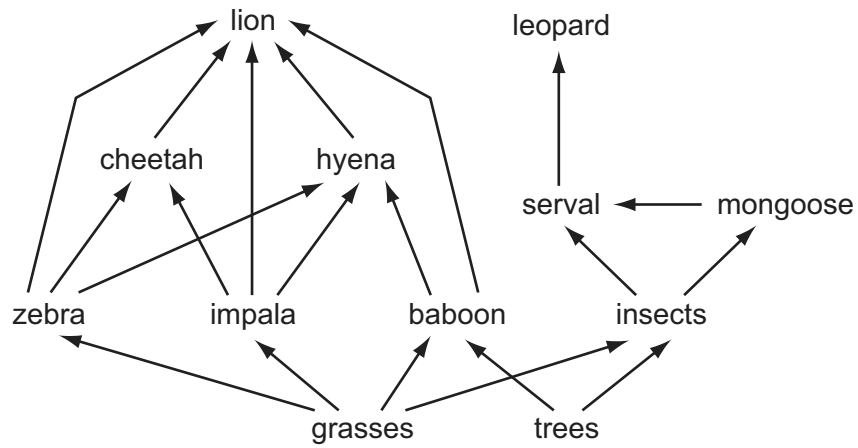


Fig. 6.1

(a) Explain what the arrows in the food web represent.

..... [1]

(b) Use the information in Fig. 6.1 to write down a food chain containing four organisms.

..... → → serval → [3]

(c) From Fig. 6.1, write down the name of

(i) a herbivore, [1]

(ii) a producer. [1]

(d) Explain how grasses and trees get their food.

.....

 [2]

(e) The numbers of impala greatly decreased.

(i) A scientist predicted that this would cause the numbers of zebras to increase.

Explain why this **increase** could happen.

.....
..... [1]

(ii) Another scientist disagreed, and predicted that the numbers of zebras would decrease.

Explain why this **decrease** could happen.

.....
..... [1]

- 7 (a) Fig. 7.1 shows a chlorine atom that has a nucleon number (mass number) of 35.

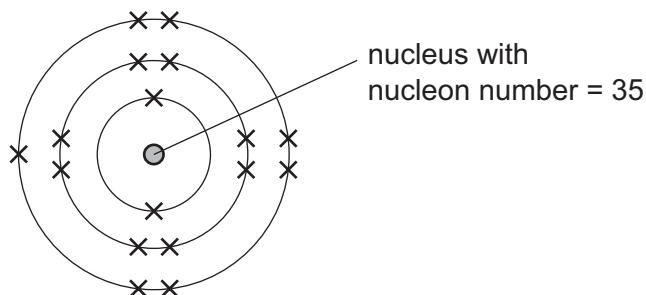


Fig. 7.1

Complete Table 7.1 to show the names and numbers of the particles found in the nucleus of this atom.

Table 7.1

name of particle	number in the nucleus
proton	

[2]

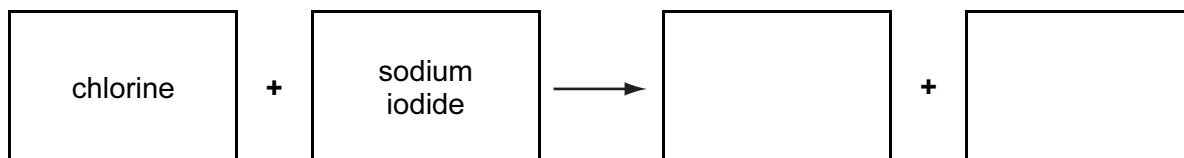
- (b) (i) Explain why chlorine is added to water that will be used for drinking.

.....

.....

..... [2]

- (ii) Complete the **word** chemical equation for the reaction that occurs when chlorine is mixed with sodium iodide solution.



[2]

(c) Fig. 7.2 shows a diagram of apparatus that can be used to produce chlorine.

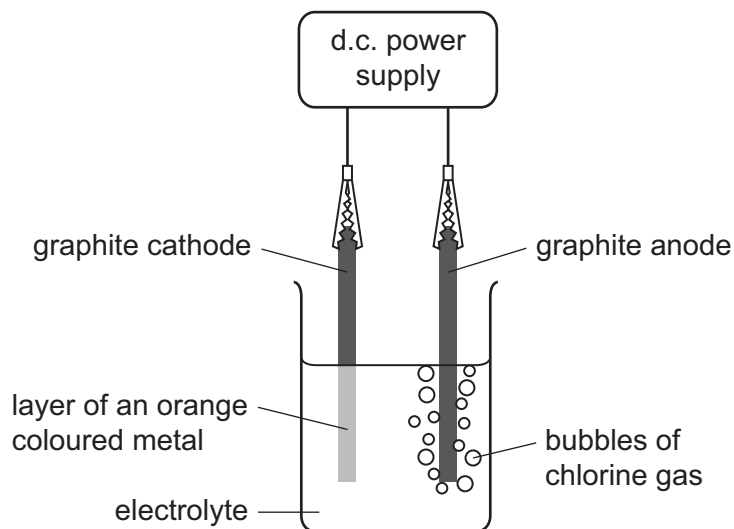


Fig. 7.2

(i) State the name of the process shown in Fig. 7.2.

..... [1]

(ii) Suggest the name of the ionic compound that has been used to make the electrolyte.

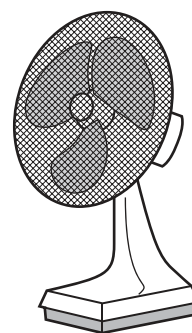
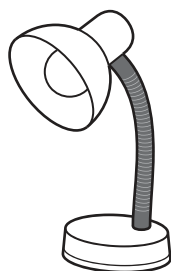
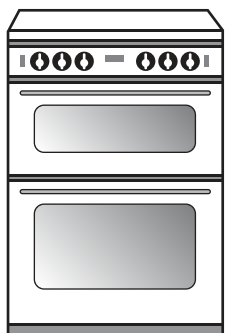
..... [1]

(iii) Use the evidence shown in Fig. 7.2 to explain your answer to (ii).

.....
 [1]

8 (a) Electrical appliances transform electrical energy into other forms of energy.

Complete the sentences below by writing down the **useful** form of energy produced in each case.



(i) In an electric cooker, electrical energy is changed into energy. [1]

(ii) In an electric lamp, electrical energy is changed into energy. [1]

(iii) In an electric fan, electrical energy is changed into energy. [1]

(b) Fossil fuels store chemical energy, which is transformed into thermal energy when the fuel is burned.

Describe how this thermal energy is used to produce electricity.

.....

.....

.....

..... [3]

(c) In some power stations highly radioactive isotopes are formed when energy is released.

Workers at these power stations are monitored to check their exposure to radiation.

(i) State **one** way in which a worker's exposure to radiation can be monitored.

.....

..... [1]

(ii) Suggest **one** way in which the people, working with radioactive isotopes, can minimise their exposure to radiation.

.....
..... [1]

(iii) State **one** effect of ionising radiation on the human body.

.....
..... [1]

(d) Gamma radiation may be emitted from radioactive isotopes.

Gamma radiation is part of the electromagnetic spectrum.

State the part of the electromagnetic spectrum which is used for

terrestrial television communications,

mobile telephone (cell phone) communications.

.....
[2]

9 (a) State the function of the uterus in the female reproductive system.

..... [1]

(b) Fig. 9.1 shows changes in the thickness of the lining of a woman's uterus over a period of 35 days.

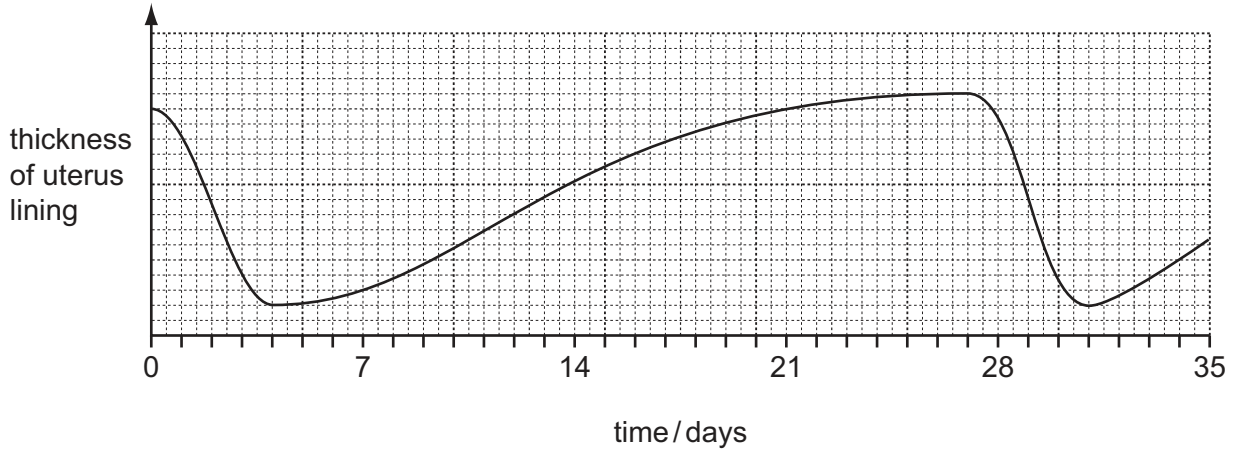


Fig. 9.1

(i) State the days when menstruation is occurring during the 35 day period.

between day and day
and between day and day [2]

(ii) Suggest on what day ovulation is most likely to occur.

..... [1]

(iii) Explain why it is important for the uterus lining to become thicker.

.....
..... [1]

(c) Hormones control the thickness of the lining of the uterus.

Name the part of the reproductive system that produces these hormones.

..... [1]

(d) (i) Explain what is meant by *fertilisation*.

.....
..... [1]

(ii) If an egg is fertilised, the uterus lining remains thick.

Draw a line on Fig. 9.1 to show this. [2]

(iii) Explain why, after fertilisation, it is important for the uterus lining to remain thick.

.....
..... [1]

10 (a) Complete Table 10.1 to compare the properties of light and sound waves.

Write **yes** or **no** in each box in Table 10.1 to compare the properties of light waves and sound waves.

Table 10.1

property	light	sound
can be reflected		
can travel through a vacuum		
is a transverse wave		
is part of the electromagnetic spectrum		

[4]

(b) Ultrasound waves are sound waves with a very high frequency. These waves cannot be heard by humans.

(i) State the approximate range of frequencies audible to humans.

From Hz to Hz. [2]

(ii) Suggest a possible frequency for the ultrasound waves.

..... Hz [1]

(iii) Devices which emit ultrasound waves can be used to keep small animals such as cats away from gardens. The ultrasound waves take 0.05 s to travel 16.5 m from the device to a cat.

Calculate the speed of the ultrasound waves.

State the formula that you use and show your working.

formula

working

..... m/s [2]

11 Fig. 11.1 shows some of the regions of the alimentary canal in a human.

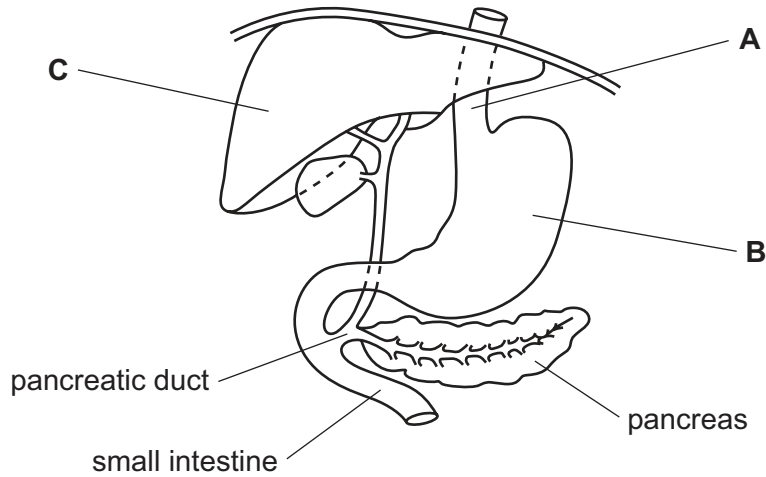


Fig. 11.1

(a) Name the structures labelled **A**, **B** and **C**.

A

B

C

[3]

(b) State **one** function of the pancreas.

.....
 [1]

(c) In people with cystic fibrosis, the pancreatic duct may become blocked.

Suggest and explain what the effect of this would be.

.....

 [2]

(d) (i) With reference to the alimentary canal, define the term *absorption*.

.....
.....
..... [2]

(ii) Name the parts of the alimentary canal in which there is the most absorption of
sugars,
water. [2]

(iii) Explain how assimilation differs from absorption.

.....
.....
..... [2]

Please turn over for Question 12.

12 (a) The elements are often described as being either metals or non-metals.

(i) Describe **two** differences in the **physical** properties of a typical metal and a typical non-metal.

1

.....

2

..... [2]

(ii) The element calcium is in Group II of the Periodic Table as shown on page 32.

Predict whether calcium is a metallic or non-metallic element. Give a reason for your answer.

prediction

.....

reason

..... [1]

(iii) Identify the name or symbol of the noble (inert) gas that is in the same period of the Periodic Table as calcium.

..... [1]

(b) Oxides are compounds of oxygen with other elements.

A student made four mixtures, **W**, **X**, **Y** and **Z**, by shaking four oxides in water. He measured the pH values of the mixtures, and his results are shown in Table 12.1.

Table 12.1

mixture	pH
W	3
X	2
Y	12
Z	7

State and explain which mixture

(i) was the most acidic,

mixture

explanation

..... [1]

(ii) had been made using the oxide of a metallic element.

mixture

explanation

..... [1]

(c) Rust is a type of iron oxide.

Fig. 12.1 shows three test-tubes, **1**, **2**, and **3**, that were set up to investigate substances that react with an iron nail to form rust.

In each test-tube an iron nail was in contact with a liquid and a gas.

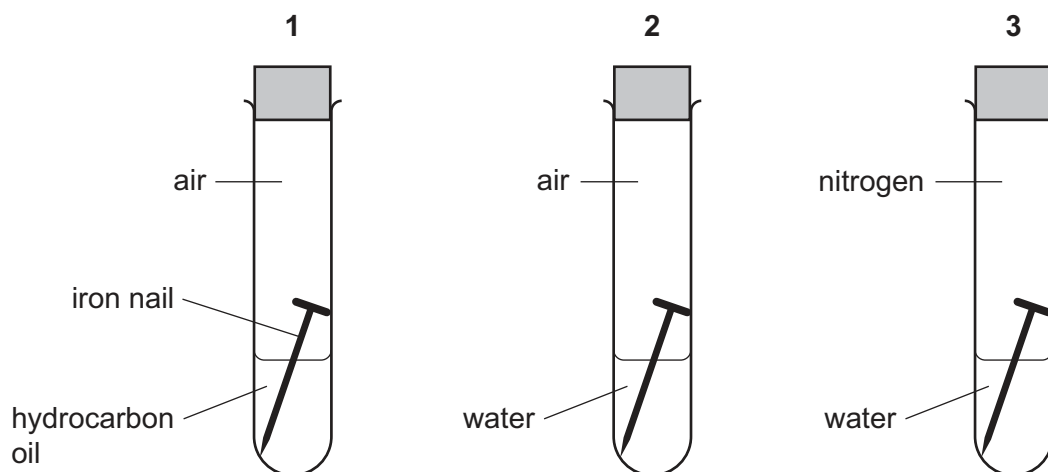


Fig. 12.1

The test-tubes and their contents were left for a week and then observed.

For each test-tube predict whether or not rust forms on the iron nail. Explain your prediction briefly in each case.

test-tube 1

prediction

explanation

test-tube 2

prediction

explanation

test-tube 3

prediction

explanation

[3]

DATA SHEET
The Periodic Table of the Elements

		Group																																																																																																									
		I	II	III	IV	V	VI	VII	0																																																																																																		
		<table border="1" style="width: 100%; border-collapse: collapse; text-align: center;"> <tr> <td style="width: 5%;"></td> <td style="width: 5%;"></td> <td style="width: 10%;">1</td> <td colspan="10"></td> </tr> <tr> <td></td> <td></td> <td>H</td> <td colspan="10"></td> </tr> <tr> <td></td> <td></td> <td>Hydrogen</td> <td colspan="10"></td> </tr> <tr> <td></td> <td></td> <td>1</td> <td colspan="10"></td> </tr> </table>												1													H													Hydrogen													1																																																						
		1																																																																																																									
		H																																																																																																									
		Hydrogen																																																																																																									
		1																																																																																																									
		<table border="1" style="width: 100%; border-collapse: collapse; text-align: center;"> <tr> <td style="width: 5%;"></td> <td style="width: 5%;"></td> <td style="width: 10%;">9</td> <td style="width: 10%;">24</td> <td colspan="10"></td> </tr> <tr> <td></td> <td></td> <td>Li</td> <td>Be</td> <td colspan="10"></td> </tr> <tr> <td></td> <td></td> <td>Lithium</td> <td>Beryllium</td> <td colspan="10"></td> </tr> <tr> <td></td> <td></td> <td>4</td> <td colspan="10"></td> </tr> <tr> <td></td> <td></td> <td>23</td> <td>Mg</td> <td colspan="10"></td> </tr> <tr> <td></td> <td></td> <td>Sodium</td> <td>Magnesium</td> <td colspan="10"></td> </tr> <tr> <td></td> <td></td> <td>11</td> <td colspan="10"></td> </tr> </table>												9	24													Li	Be													Lithium	Beryllium													4													23	Mg													Sodium	Magnesium													11										
		9	24																																																																																																								
		Li	Be																																																																																																								
		Lithium	Beryllium																																																																																																								
		4																																																																																																									
		23	Mg																																																																																																								
		Sodium	Magnesium																																																																																																								
		11																																																																																																									
		39	40	45	48	51	52	55	56	59	59	64	65	70	73	75	79	80	84																																																																																								
		K	Ca	Sc	Ti	V	Cr	Mn	Fe	Co	Ni	Cu	Zn	Ga	Ge	As	Se	Br	Kr																																																																																								
		Potassium	Calcium	Scandium	Titanium	Vanadium	Chromium	Manganese	Iron	Cobalt	Nickel	Copper	Zinc	Gallium	Germanium	Arsenic	Selenium	Bromine	Krypton																																																																																								
		19	20	21	22	23	24	25	26	27	28	29	30	31	32	33	34	35	36																																																																																								
		85	88	89	91	93	96	101	101	103	106	108	112	115	119	122	128	127	131																																																																																								
		Rb	Sr	Y	Zr	Nb	Mo	Ru	Rh	Pd	Ag	Cd	In	Sn	Sb	Te	I	Xe																																																																																									
		Rubidium	Strontium	Yttrium	Zirconium	Niobium	Molybdenum	Ruthenium	Rhodium	Palladium	Silver	Cadmium	Indium	Tin	Antimony	Tellurium	Iodine	Xenon																																																																																									
		37	38	39	40	41	42	44	45	46	47	48	49	50	51	52	53	54																																																																																									
		133	137	139	178	181	184	190	190	192	195	197	201	204	207	209	209	209																																																																																									
		Cs	Ba	La	Hf	Ta	W	Os	Ir	Pt	Au	Hg	Pb	Po	At	At	At	Rn																																																																																									
		Caesium	Barium	Lanthanum	Hafnium	Tantalum	Tungsten	Osmium	Iridium	Platinum	Gold	Mercury	Lead	Polonium	Astatine	Astatine	Astatine	Radon																																																																																									
		55	56	57	72	73	74	76	77	78	79	80	82	84	85	85	86	86																																																																																									
		Fr	Ra	Ac																																																																																																							
		Francium	Radium	Actinium																																																																																																							
		87	88	89																																																																																																							

		162	165	167	169	173	175
		Dy	Ho	Er	Tm	Yb	Lu
		Dysprosium	Holmium	Erbium	Thulium	Ytterbium	Lutetium
		66	67	68	69	70	71
		159	157	152	150	144	141
		Tb	Gd	Eu	Sm	Nd	Pr
		Terbium	Gadolinium	Euroium	Samarium	Neodymium	Praseodymium
		65	64	63	62	60	59
		238	238	238	232	232	232
		U	U	Np	Pu	Pa	Th
		Uranium	Uranium	Neptunium	Plutonium	Protactinium	Thorium
		92	92	93	94	91	90

		a	X	b
		Key		
		a = relative atomic mass	X = atomic symbol	b = proton (atomic) number

*58-71 Lanthanoid series
†90-103 Actinoid series

The volume of one mole of any gas is 24 dm³ at room temperature and pressure (r.t.p.).

Permission to reproduce items where third-party owned material protected by copyright is included has been sought and cleared where possible. Every reasonable effort has been made by the publisher (UCLES) to trace copyright holders, but if any items requiring clearance have unwittingly been included, the publisher will be pleased to make amends at the earliest possible opportunity.

Cambridge International Examinations is part of the Cambridge Assessment Group. Cambridge Assessment is the brand name of University of Cambridge Local Examinations Syndicate (UCLES), which is itself a department of the University of Cambridge.